

Housebreaking

The law states that, “*housebreaking is not a substantive crime; there must be, in addition, a felonious intent. The term ‘house’ applies not only to a dwelling-house, but also to any other roofed building, whether finished or unfinished, or to any part of a building used as a separate dwelling, which is secured against intrusion by unauthorised persons. To constitute housebreaking, not merely the sanctity, but the strength or security of the building, must be overcome. It is not essential that actual damage should be caused to the building; the security of the building is overcome whenever entry is effected by what is not the usual, or intended, mode of entrance*”.

Source: Scottish Criminal Law Manual, s.14

The three main types of housebreaking are:

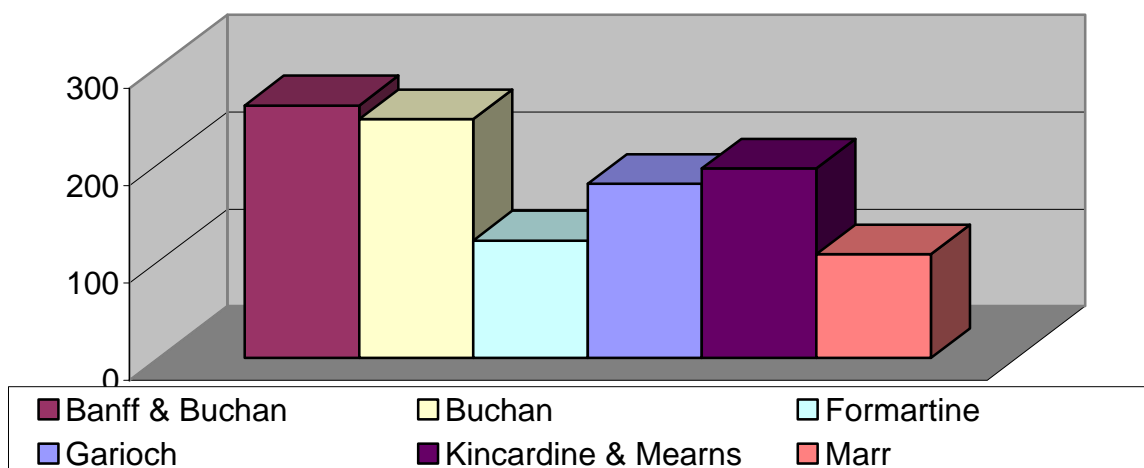
- ☞ Domestic – any domestic dwelling place, i.e. a house
- ☞ Other – any domestic non-dwelling place, i.e. a shed or outhouse
- ☞ Commercial – any commercial property, i.e. a business or shop.

Domestic Housebreaking

Domestic housebreaking includes break-ins and attempted break-ins to dwelling premises. Domestic Housebreaking accounted for **7%** of all reported crimes in Aberdeenshire over the three-year period. There was a decrease of **20.5%** between 2001 and 2002; there was a further decrease of **6.9%** between 2002 and 2003. In total there was a decrease of **25.9%** in reported incidents of domestic housebreakings in Aberdeenshire during the three-year period.

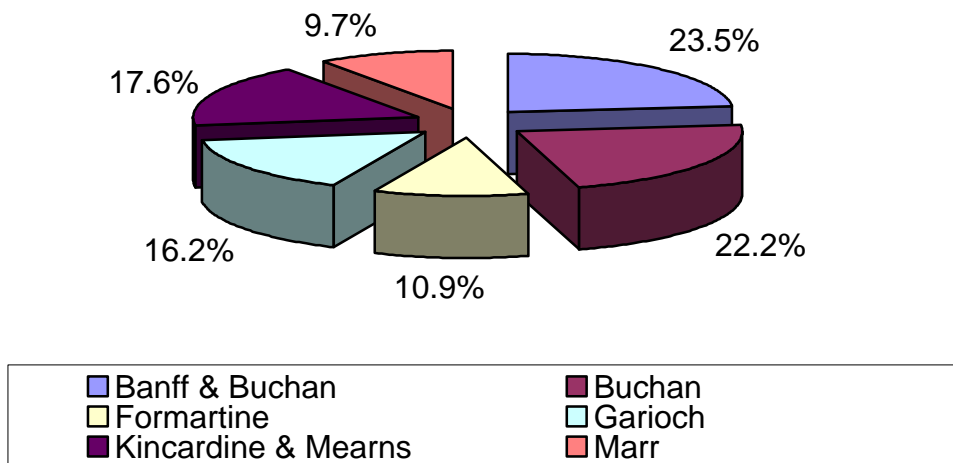
Of the six local authority areas, the areas with the highest number of reported domestic housebreakings were Banff & Buchan and Buchan. **23.5%** of domestic housebreakings took place in the Banff & Buchan area, with **22.2%** occurring in the Buchan area. The area with the lowest number of this type of crime was the Marr area, accounting for **9.2%** of all reported domestic housebreakings.

Number of Reported Domestic Housebreakings in Aberdeenshire, by Local Area during the three-year period



Source: Grampian Police

Percentage of Reported Domestic Housebreakings in Aberdeenshire, by Local Area during the three-year period



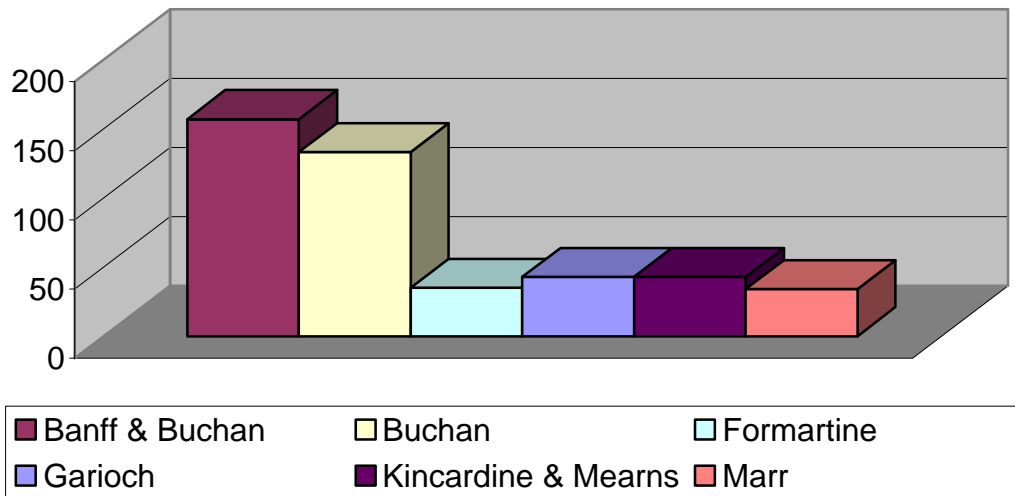
Source: Grampian Police

Non-Domestic Break-ins

Non-Domestic Break-ins include break-ins and attempted break-ins to non-dwelling premises. Non-domestic break-ins accounted for **3%** of all reported crimes in Aberdeenshire over the three-year period. There was a decrease of **14.8%** between 2001 and 2002; however, there was an increase of **10.1%** between 2002 and 2003. In total there was a decrease of **6.2%** in reported incidents of non-domestic break-ins in Aberdeenshire during the three-year period.

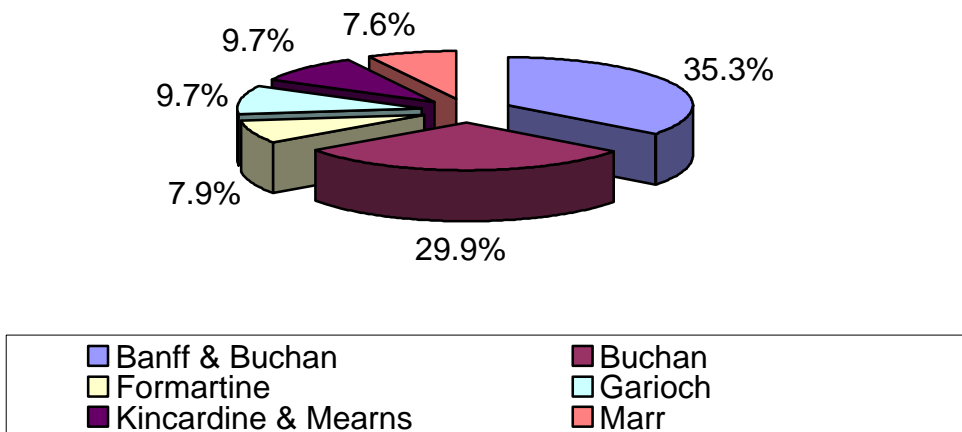
Of the six local authority areas, the areas with the highest number of reported non-domestic break-ins were Banff & Buchan and Buchan. **35.3%** of non-domestic break-ins took place in the Banff & Buchan area, with **29.9%** occurring in the Buchan area. The areas with the lowest number of this type of crime was Marr and Formartine areas, accounting for **7.6%** and **7.9%** of all reported non-domestic break-ins.

Number of Reported Non-Domestic Break-ins in Aberdeenshire, by Local Area during the three-year period



Source: Grampian Police

Number of Reported Non-Domestic Break-ins in Aberdeenshire, by Local Area during the three-year period



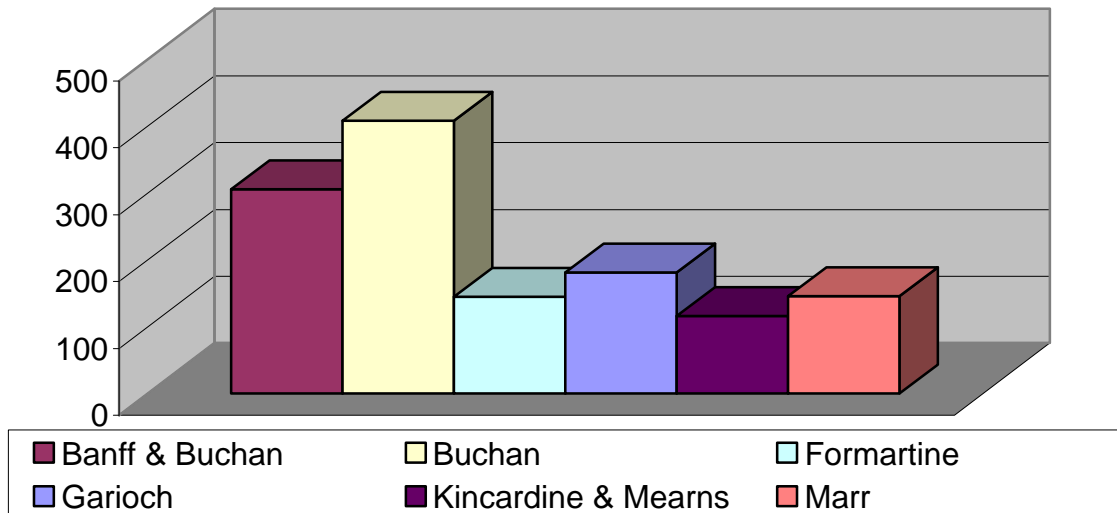
Source: Grampian Police

Commercial Break-ins

The number of Commercial break-ins in Aberdeenshire was similar to the number of domestic breakings in Aberdeenshire, with commercial break-ins accounting for **7%** of all reported crimes in Aberdeenshire over the three-year period. There was a **7.9%** decrease in the number of reported commercial break-ins between 2001 and 2002, with a further decrease of **18.6%** between 2001 and 2003. In total, there was a **25.0%** decrease in the number of reported commercial break-ins over the three-year period.

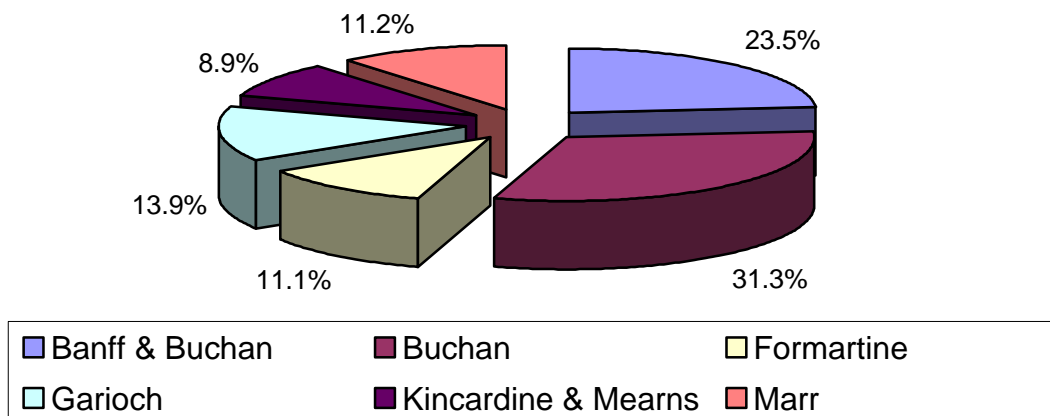
The charts below provide a breakdown of the number of commercial break-ins in Aberdeenshire by local area.

Number of Reported Commercial Break-ins in Aberdeenshire, by Local Area during the three-year period



Source: Grampian Police

Percentage of Reported Commercial Break-ins in Aberdeenshire, by Local Area During the three-year period



Source: Grampian Police

As can be seen, of the six local authority areas, the areas with the highest number of reported commercial break-ins were Buchan and Banff & Buchan. **31.3%** of commercial break-ins took place in the Buchan area, with **23.5%** occurring in the Banff & Buchan area. The area with the lowest number of this type of crime was Kincardine & Mearns area, accounting for **8.9%** of all reported commercial break-ins.

WHAT DOES THIS TELL US?

- Reporting of Domestic Housebreakings has decreased by 25.9% within the last three-years. Reporting of Non- Domestic Break-ins has decreased by 6.2% within the last three-years.
- In Commercial Break-ins there has been a 25.0% decrease in the reporting of this crime, over the last three-years.