

Child Protection Register

The Child Protection Register is a register of Children in Aberdeenshire who are the subject of an inter-agency child protection plan. It provides a central point of inquiry for professionals who are concerned about the child's development, welfare and safety.

Number of Children on the Child Protection Register in Aberdeenshire in the period between 2001/2002 and 2003/2004

Year	Number of Children on Register	% Increase/decrease
2001/2002	106	-
2002/2003	112	5.7
2003/2004	99	-11.6

Source: Aberdeenshire Council, Housing and Social Work

On 31st March 2002, there were **106** children on the Child Protection Register in Aberdeenshire. This figure increased by **5.7%** to **112** in 2002/2003, followed by a decrease of **6.6%** to **99** in 2003/2004.

There are standard definitions of abuse and criteria for placing a child's name on the Register. These categories for registration are:

- Emotional Abuse
- Neglect
- Neglect and Emotional Abuse
- Physical Abuse
- Physical Abuse and Neglect
- Physical and Emotional Abuse
- Physical, Emotional Abuse and Neglect
- Sexual Abuse
- Sexual and Emotional Abuse
- Sexual, Physical and Emotional Abuse

Children on the Child Protection in Aberdeenshire 31st March 2002

Category	Number of Children	% Total
Emotional Abuse	25	24%
Non-organic Failure to Thrive	1	1%
Physical Injury	36	34%
Physical Neglect	29	27%
Sexual Abuse	15	14%
Total	106	100%

Source: Aberdeenshire Council, Housing and Social Work

As can be seen above, the most common reasons for a child being placed on the Child Protection Register in Aberdeenshire between 1st April 2001 and 31st March 2002 was Physical Injury accounted for **34%**. Physical Neglect and Emotional Abuse were also significantly high, accounting for **27%** and **24%** of all registrations for this period.

Children on the Child Protection Register in Aberdeenshire 31st March 2003

Category	Number of Children	% Total
Emotional Abuse	19	17%
Neglect	25	21%
Neglect and Emotional Abuse	14	13%
Non-organic Failure to Thrive	1	1%
Physical Abuse	20	18%
Physical and Emotional Abuse	17	15%
Physical, Emotional Abuse and Neglect	2	2%
Sexual Abuse	12	11%
Sexual and Emotional Abuse	2	2%
Total	112*	100%

* Some children may be in more than one category

Source: Aberdeenshire Council, Housing and Social Work

As can be seen above, the most common reason for a child being placed on the Child Protection Register in Aberdeenshire between **1st April 2002 and 31st March 2003** was Neglect, which accounted for **21%** of all registrations on the Child Protection Register for this period. Physical Abuse and Emotional Abuse were also significantly high, accounting for **18%** and **17%** of all registrations for this period.

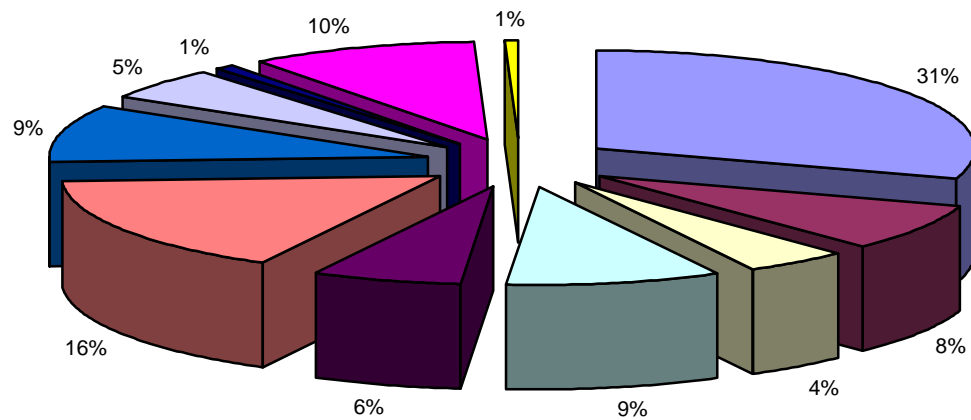
Children on the Child Protection Register in Aberdeenshire 31st March 2004

Category	Number of Children	% Total
Emotional Abuse	51	52%
Non-organic Failure to Thrive	27	27%
Physical Injury	16	16%
Physical Neglect	1	1%
Sexual Abuse	4	4%
Total	99	100%

Source: Aberdeenshire Council, Housing and Social Work

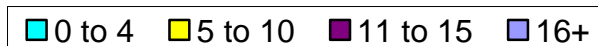
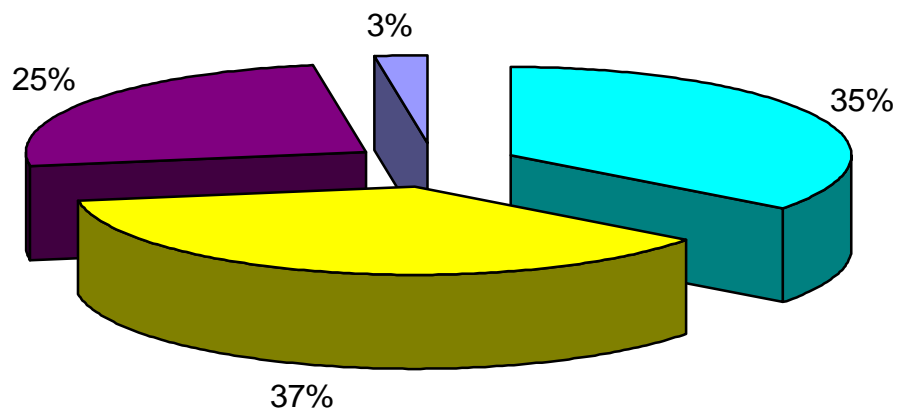
As can be seen above, the most common reason for a child being placed on the Child Protection Register in Aberdeenshire between **1st April 2003 and 31st March 2004** was Emotional Abuse, which accounted for **52%** of all registrations on the Child Protection Register for this period. Non-organic Failure to Thrive was also significantly high, accounting for **27%** of all registrations for this period.

Reasons for a Child being placed on the Child Protection Register in Aberdeenshire for the period of 1st April 2001 to 31st March 2004.



Source: Aberdeenshire Council, Housing and Social Work

Breakdown of Children on Child Protection Register in Aberdeenshire for the period of 1st April 2001 to 31st March 2004, by Age.



Source: Aberdeenshire Council, Housing and Social Work

As can be seen above, the majority of children on the Child Protection Register as of 1st April 2001 to the 31st March 2004 were in the **5-10** age group, accounting for **37%** of all registrations respectively in Aberdeenshire

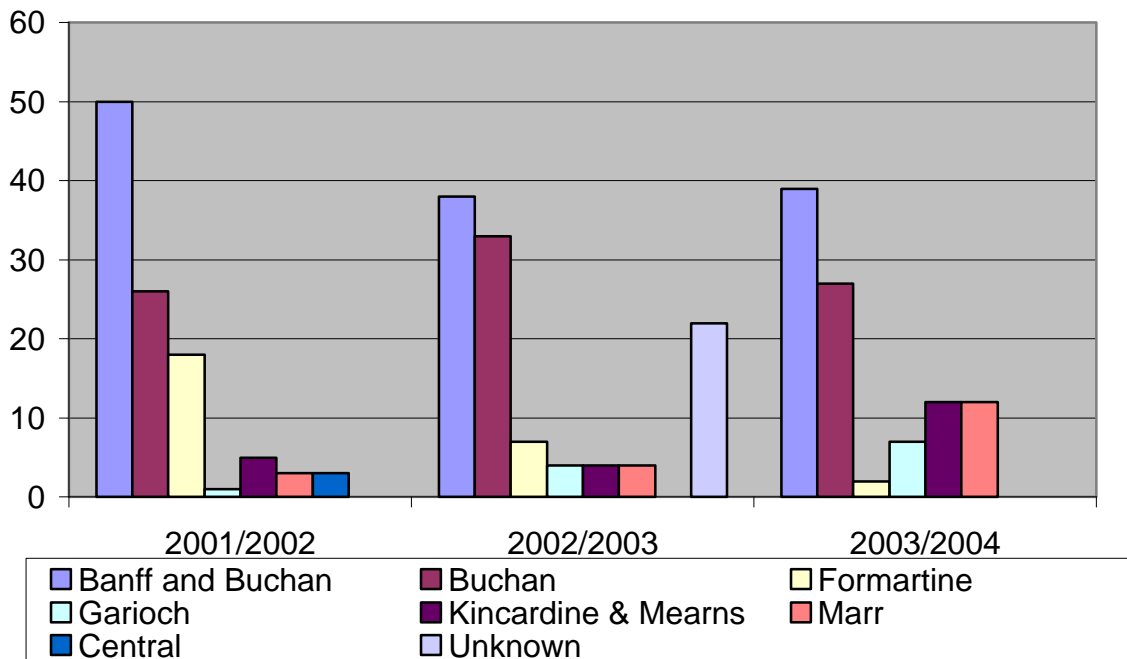
during this period. The **0-4** age group was also significantly high, accounting for **35%** of all registrations during this period. Only a small number of children on the register (**3%** of all registrations) were in the **16+** age group.

Aberdeenshire is broken down into twelve teams for registering children on the Child Protection Register. These teams are as follows:

- Banff
- Peterhead
- Banchory
- Kemnay / Westhill
- Fraserburgh
- Portlethen
- Aboyne
- Turriff
- Inverurie
- Huntly
- Ellon
- Stonehaven

These teams were then grouped together by local area in order to be compatible with the format of the Audit. The breakdown of the figures is as follows:

Number of Children on the Child Protection Register in Aberdeenshire, by Local Area in the three-year period between 2001/02 and 2003/04



Source: Aberdeenshire Council, Housing and Social Work

The areas with the largest number of children on the Register during the three-year period were the Banff & Buchan and Buchan areas of Aberdeenshire. During the three-year period, the number of children on the Register from the Banff & Buchan and Buchan areas accounted for **39%** and **27%** of all registrations in Aberdeenshire during the three-year period. The area with the fewest number of registrations during the three-year period was Garioch, which accounted for **4%** of all registrations in Aberdeenshire during the three-year period.

WHAT DOES THIS TELL US?

- There was a decrease in the number of children being held on the Protection Register. It decreased by **11.6%** between 2002/03 and 2003/04.
- The majority of the children on the register are there due to Emotional Abuse and the 5 to 10 age group had the highest amount of children on the register during the three-year period.
- The areas with the largest number of children on the Register during the three-year period were the Banff & Buchan and Buchan areas of Aberdeenshire.